

AVAILABLE	51.8	50.6	54.7	50	47.4	160	1-917621-1
AVAILABLE	45.8	44.6	48.7	44	41.4	140	1-917621-0
NOT AVAILABLE	39.8	38.6	42.7	38	35.4	120	↑ -9
AVAILABLE	33.8	32.6	36.7	32	29.4	100	-8
NOT AVAILABLE	30.8	29.6	33.7	29	26.4	90	-7
AVAILABLE	27.8	26.6	30.7	26	23.4	80	-6
↑	24.8	23.6	27.7	23	20.4	70	-5
	21.8	20.6	24.7	20	17.4	60	-4
	18.8	17.6	21.7	17	14.4	50	-3
AVAILABLE	15.8	14.6	18.7	14	11.4	40	-2
NOT AVAILABLE	12.8	11.6	15.7	11	8.4	30	917621-1
TOOLING STATUS	E	D	C	B	A	POS.	△ PART No.

推奨基板取付寸法
RECOMMENDED P.C.BOARD LAYOUT

THIS DRAWING IS A CONTROLLED DOCUMENT.		DWN T.KUSUHARA 07FEB95		AMP Tyco Electronics AMP K.K. Kawasaki, Japan	
DIMENSIONS: 単位: 耗 MM		CHK T.KUSUHARA 07FEB95		NAME 名称	
TOLERANCES UNLESS OTHERWISE SPECIFIED: 一般公差		APVD Y.YOSHIMURA 13FEB95		PRODUCT SPEC 製品規格 108-5468	
0 PLC ± 0.3		APPLICATION SPEC 取付適用規格 114-5254		SIZE A3	
1 PLC ± 0.3		WEIGHT		CAGE CODE 00779	
2 PLC ± 0.3		CUSTOMER DRAWING		DRAWING NO 番号 C-917621	
3 PLC ± 0.3		SCALE 尺度 4:1		RESTRICTED TO	
4 PLC ANGLES ± 0.3		SHEET 1 OF 2		REV M	
FINISH 仕上		REV M			

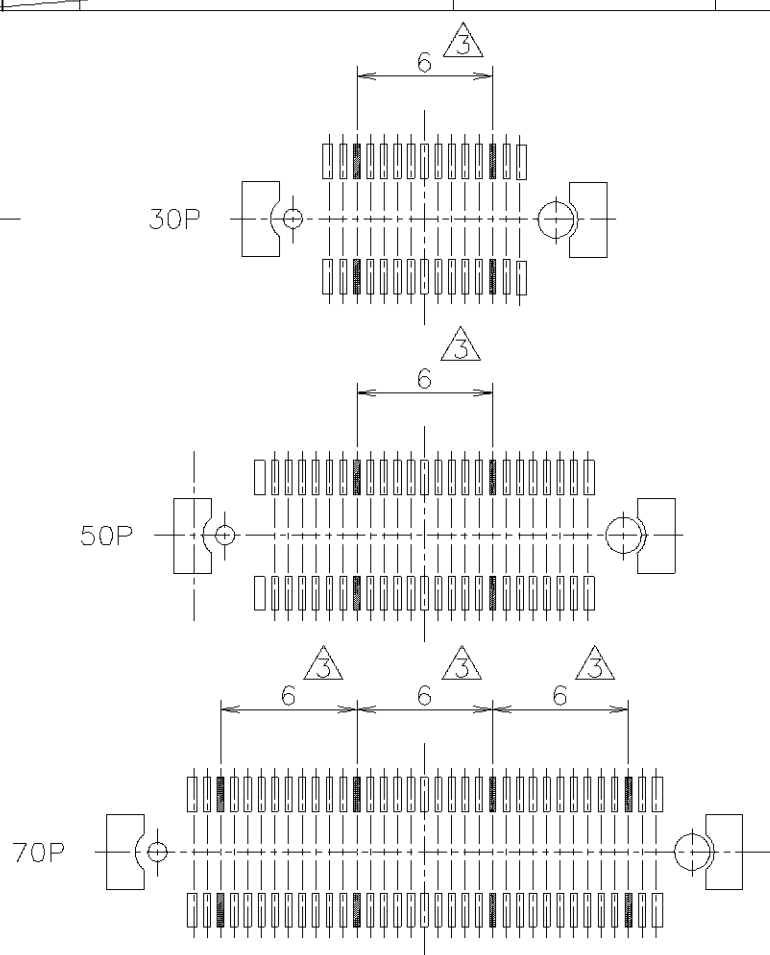
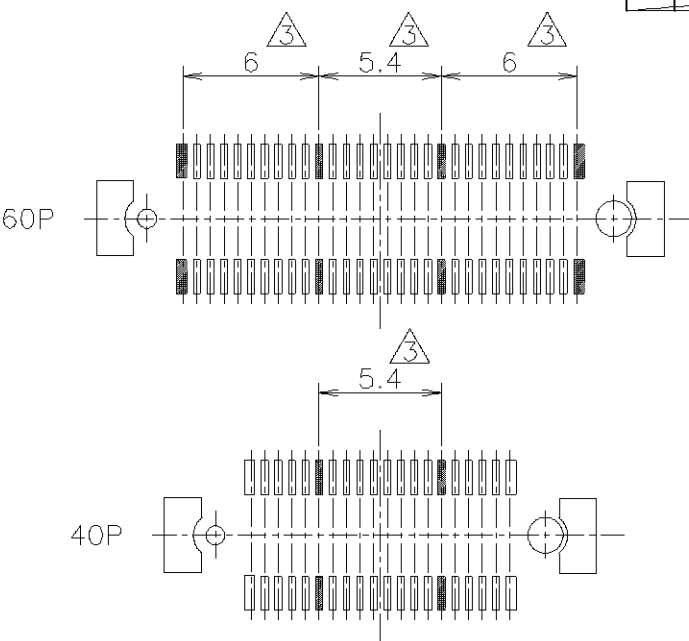
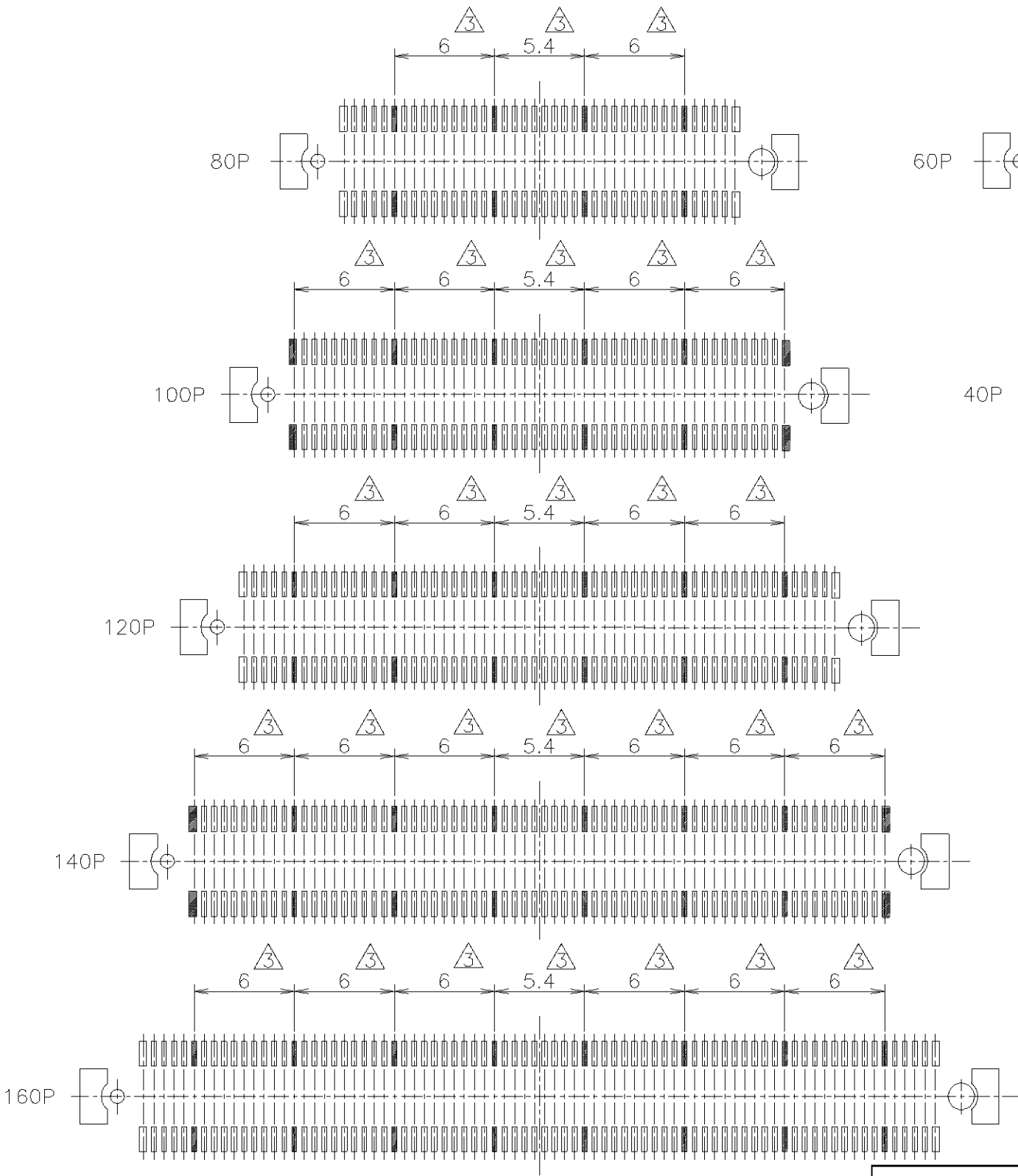
LOC	DIST	REVISIONS			
J		P	LTR	DESCRIPTION	DATE
				SEE SHEET 1 OF 2	

D

C

B

A



- ① MATERIAL : HOUSING : HIGH TEMP THERMO PLASTIC UL94-V0
CONTACT : COPPER ALLOY

② FINISH : UNDER PL Ni 0.0013mm MIN ALL OVER
CONTACT AREA 0.0002 MIN Au PL.
SOLDERING AREA: SIGNAL POS. 0.00005 MIN Au PL.
GROUND POS. 0.001 MIN Sn-Pb.

③ THIS POSITION IS GROUND CIRCUIT.

④ SEE PACKING ASSY DWG AS FINAL ASSY PART NUMBER.
- ① 材料：ハウジング：高耐熱性樹脂 UL94-V0
コンタクト：銅合金

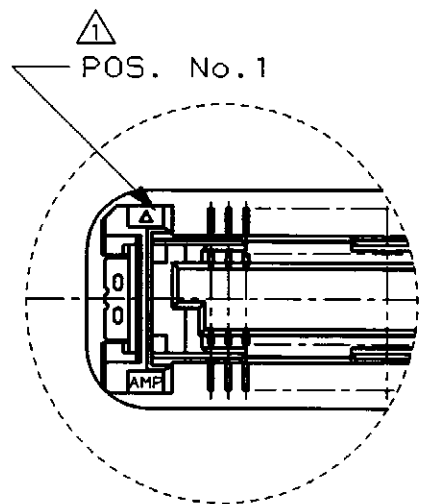
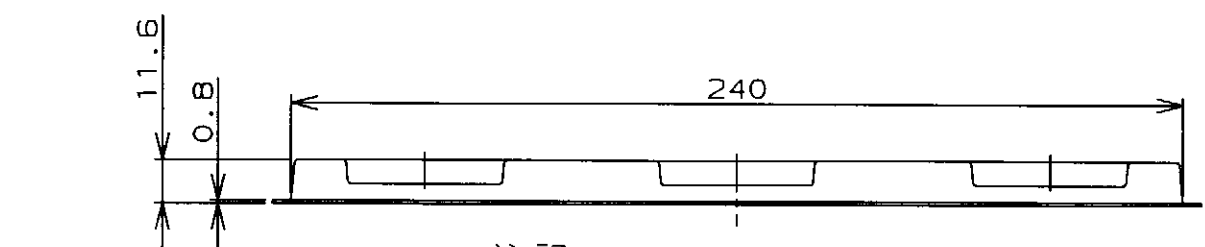
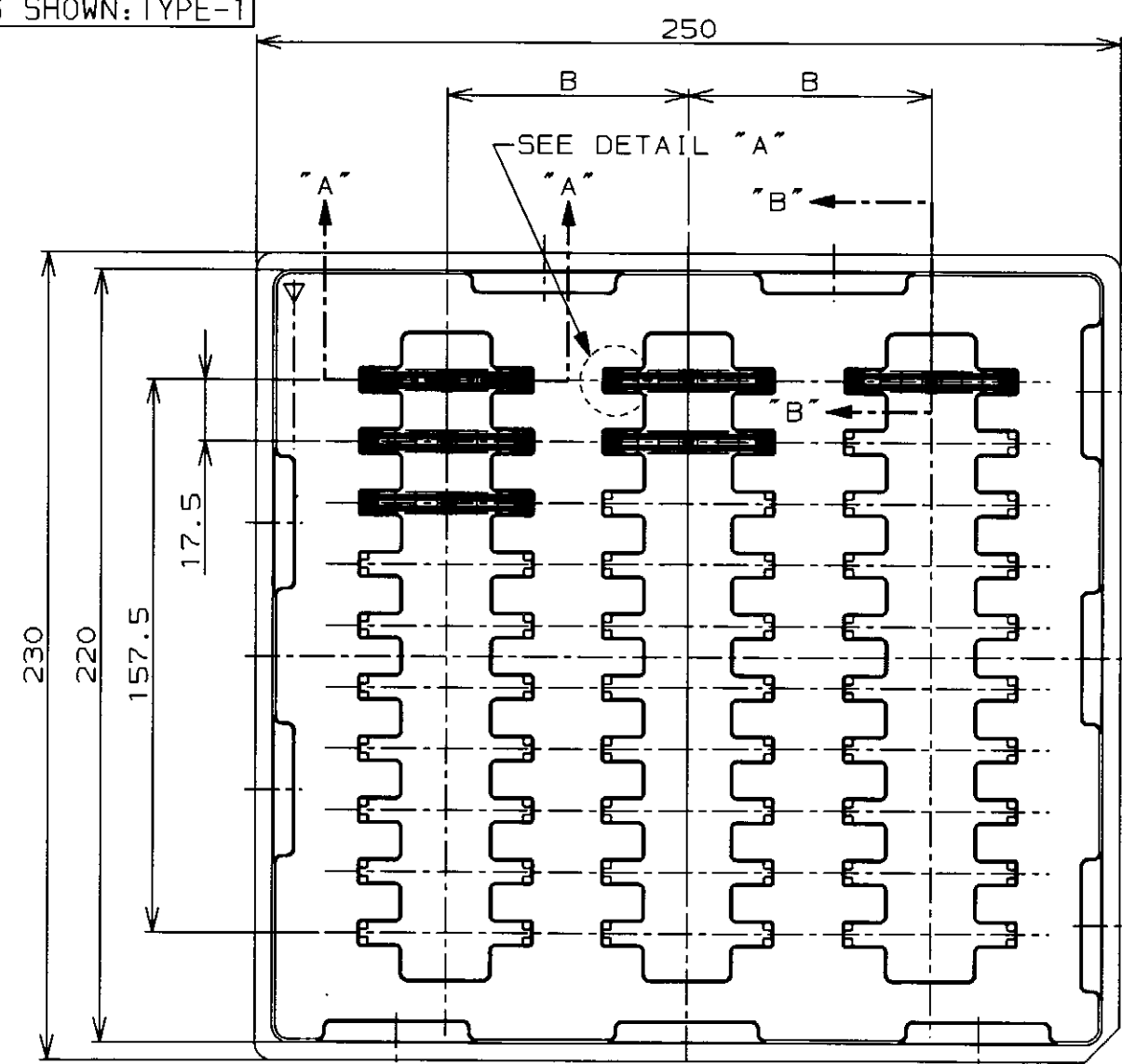
② 仕上：Ni下地 0.0013mm MIN
接触部 金メッキ0.0002MIN
半田付部：シグナル回路 金メッキ 0.00005 MIN
：グラウンド回路 半田メッキ 0.001 MIN

③ このポジションは、グラウンド回路とする。

④ 最終組立品型番は梱包図面参照。

THIS DRAWING IS A CONTROLLED DOCUMENT.		DWN	Tyco Electronics AMP K.K. Kawasaki, Japan		
		CHK			
		APVD	NAME 名称		
DIMENSIONS: 単位： 耗 MM		PRODUCT SPEC 製品規格	REC ASSEMBLY 4H FOR 0.6 BTB CONNECTOR WITH G-CONT		
TOLERANCES UNLESS OTHERWISE SPECIFIED: 一般公差		APPLICATION SPEC 取付適用規格			
MATERIAL 材料		WEIGHT	SIZE	CAGE CODE	DRAWING NO 番号
			A3	00779	C-917621
		CUSTOMER DRAWING	SCALE 尺度	SHEET	REV
			3:1	2 OF 2	M

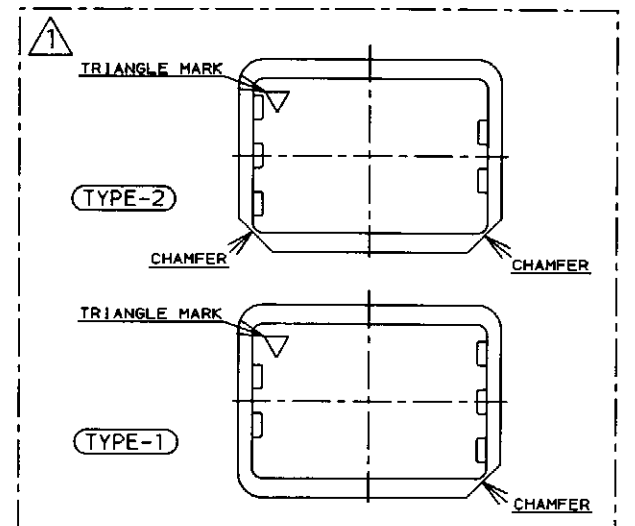
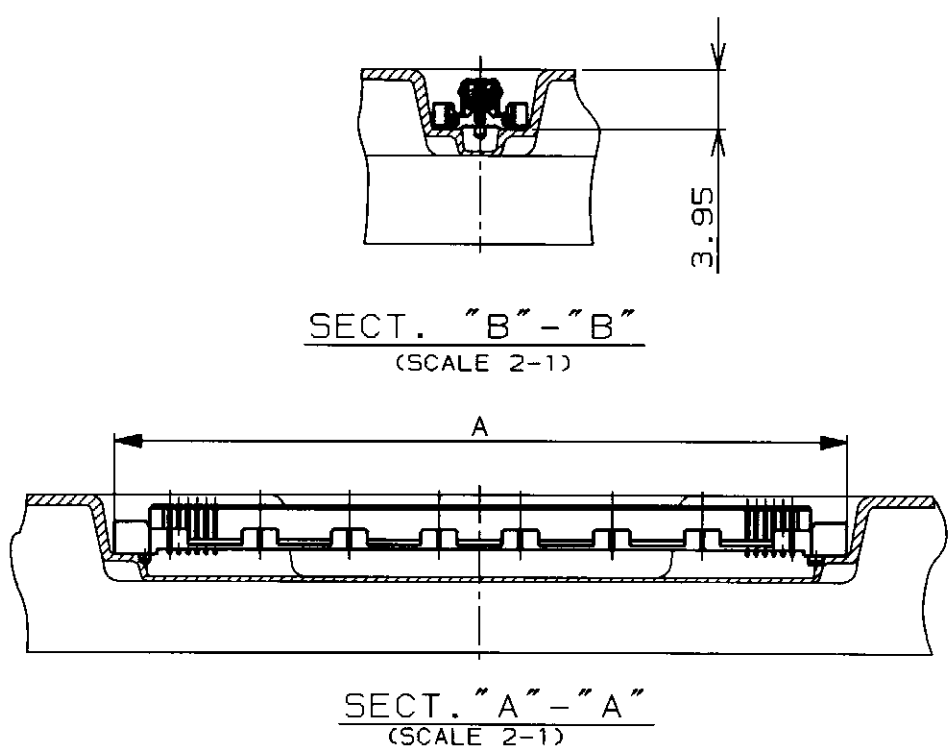
AS SHOWN: TYPE-1



DETAIL "A"
(SCALE 4-1)

注記
△ トレイはTYPE-1, TYPE-2のどちらか一方を使用する事。
(詳細は梱包仕様書参照)

NOTE
△ ONE OR THE OTHER OF THESE TRAYS MUST BE USED.
(REFER TO PACKING SPECIFICATIONS)



	SEALANT (SIF-200B)	NON SEALANT	TOOLING STATUS									
			AVAILABLE	3	30	70	54.7	160	912063-9	1-917621-1	6-316077-1	
			AVAILABLE	↑	↑	↑	48.7	140	912063-8	1-	-0	-0
			NOT AVAILABLE	↓	↓	↓	42.7	120	4-912065-9		-9	-9
			NOT AVAILABLE	↓	↓	↓	36.7	100	8-912066-2		-8	-8
			NOT AVAILABLE	3	30	70	33.7	90	9-912066-6		-7	-7
			AVAILABLE	5	50	43	30.7	80	912067-3		-6	-6
			AVAILABLE	↑	↑	↑	27.7	70	912063-1		-5	-5
			NOT AVAILABLE	↓	↓	↓	24.7	60	9-912066-5		-4	-4
			AVAILABLE	↓	↓	↓	21.7	50	9-912062-9		-3	-3
			NOT AVAILABLE	↓	↓	↓	18.7	40	9-912066-4		-2	-2
			NOT AVAILABLE	5	50	43	15.7	30	9-912066-3	917621-1	5-316077-1	
			AVAILABLE	3	30	70	54.7	160	912063-9	1-917621-1	1-316077-1	
			AVAILABLE	↑	↑	↑	48.7	140	912063-8	1-	-0	-0
			NOT AVAILABLE	↓	↓	↓	42.7	120	4-912065-9		-9	-9
			NOT AVAILABLE	↓	↓	↓	36.7	100	8-912066-2		-8	-8
			NOT AVAILABLE	3	30	70	33.7	90	9-912066-6		-7	-7
			AVAILABLE	5	50	43	30.7	80	912067-3		-6	-6
			AVAILABLE	↑	↑	↑	27.7	70	912063-1		-5	-5
			NOT AVAILABLE	↓	↓	↓	24.7	60	9-912066-5		-4	-4
			AVAILABLE	↓	↓	↓	21.7	50	9-912062-9		-3	-3
			NOT AVAILABLE	↓	↓	↓	18.7	40	9-912066-4		-2	-2
			NOT AVAILABLE	5	50	43	15.7	30	9-912066-3	917621-1	316077-1	
			TOOLING STATUS	LOW	QTY	B	A	POS.	TRAY P/N	CONN P/N	PART No.	

G	REVISED	FJ00-0874-97	J.T	ZK	1/29/97
F	REVISED	FJ00-0354-97	J.T	T.K	4/APR/97
E	REVISED	FJ00-5330-96	J.T	T.K	18/SEP/96
D	ADDED POS.	FJ00-5256-96	J.T	T.K	4/SEP/96
C	REVISED	FJ00-3787-95	T.K	I.E	21/DEC/96
B	REVISED	FJ00-3424-95	T.K	I.E	23/OCT/95
A	REVISED	FJ00-2670-95	T.K	I.E	8/JUN/95
O	RELEASED	FJ00-2524-95	T.K	I.E	12/MAY/95
LTR	変更 (REVISION RECORD)		DR	CHK	DATE

Copyright ©1995年 日本エー・エム・ビー株式会社		Copyright ©1995 AMP (Japan), LTD. ALL RIGHTS RESERVED.		名称 (NAME) TRAY ASS'Y FOR FH 0.6BTB CONNECTOR REC 4H W/G-CONT	
適合電線断面 (WIRE RANGE) mm ² (AWG -)		被覆外径 (INSULATION DIA.) mmφ		一般公差 (GENERAL TOLERANCE) 10以下: ±0.2 10を超え 30以下: ±0.25 30を超え 100以下: ±0.3 角 度: ±3°	
材料 (MATERIAL)		仕上 (FINISH)		LOD B J	
DR. T.KUSUHARA 11/MAY/95		DE. T.KUSUHARA 11/MAY/95		番号 (No.) C-316077	
CHK. I.ENOMOTO 12/MAY/95		APP. I.ENOMOTO 12/MAY/95		尺度 (SCALE) 1-2	
				REV. G	
				SHEET 1 OF 1	